

# OASIS 17-P17

PLOT SURFACE : 854.55 m<sup>2</sup>

## GROUND FLOOR

### BUILDING Surface

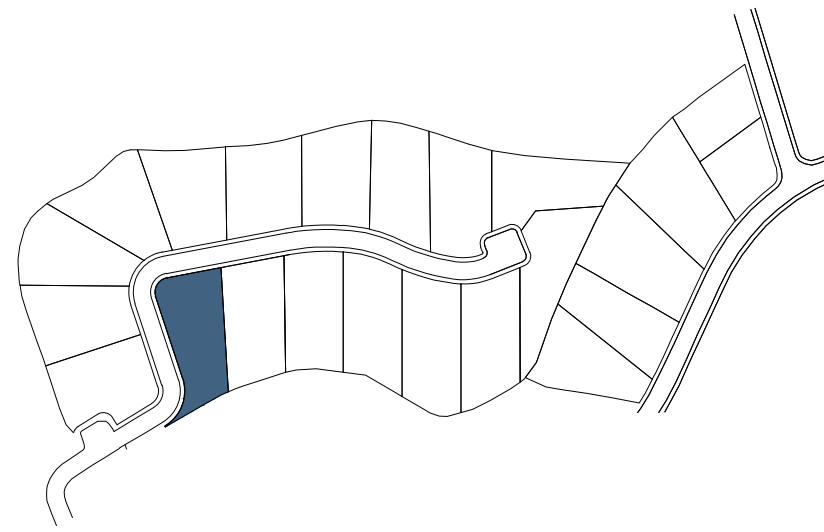
Ground Floor	98.34m <sup>2</sup>
Terrace	51.07m <sup>2</sup>
Pool	36.96m <sup>2</sup>

**TOTAL BUILT GROUND FLOOR** 186.37m<sup>2</sup>

### BUILDING Area sqm

Ground Floor	186.37m <sup>2</sup>
First Floor	154.68m <sup>2</sup>

**TOTAL BUILT AREA** 341.05m<sup>2</sup>

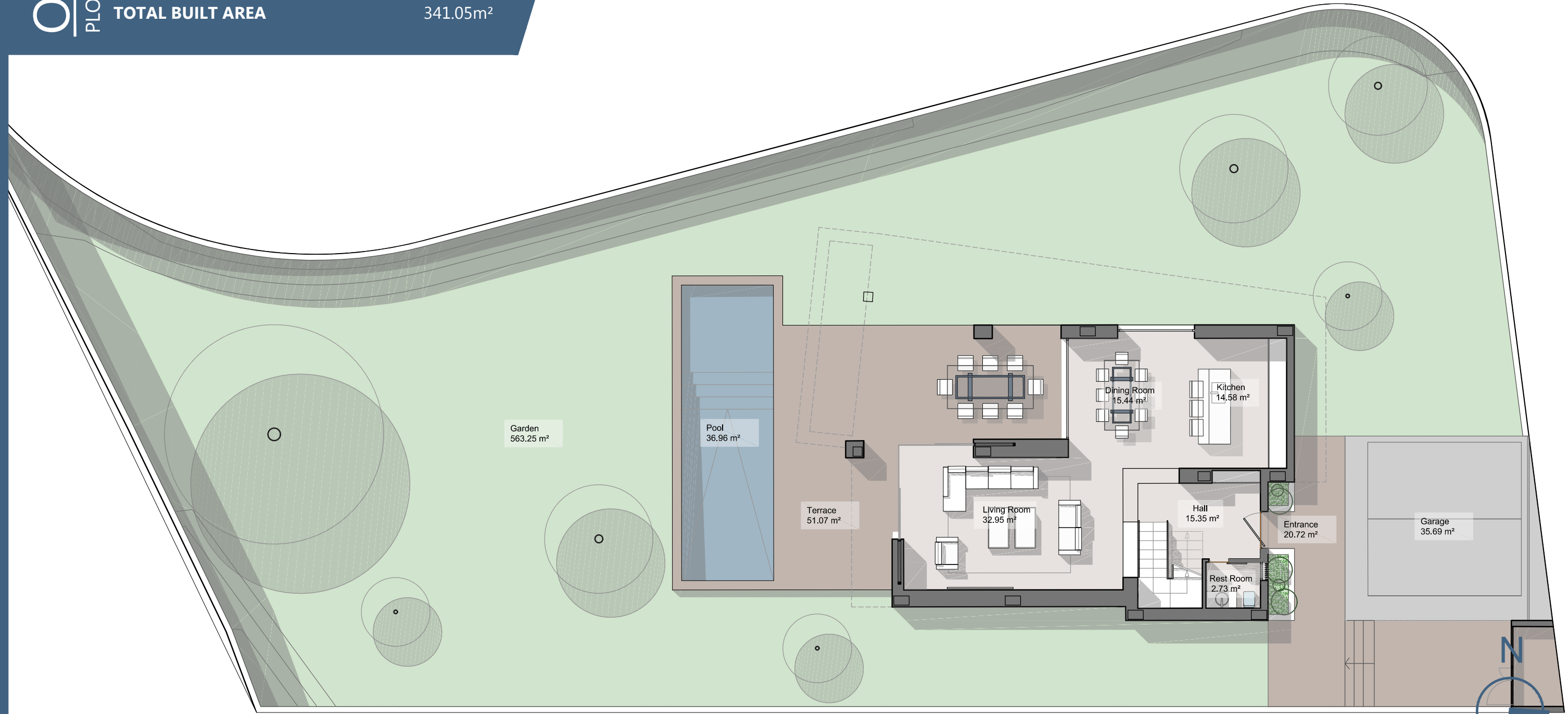


# OASIS 17

laboratorio URBANO

M marein73

PROMOTORES



NOTA: Estos planos son orientativos, pudiendo sufrir modificaciones durante el desarrollo del proyecto, a juicio de la dirección técnica y de los organismos competentes. El mobiliario es figurativo no vinculante.

NOTE: These plans are for guidance only, and may change during the project, according to the technical management. Figurative furniture is not binding.

# OASIS 17-P17

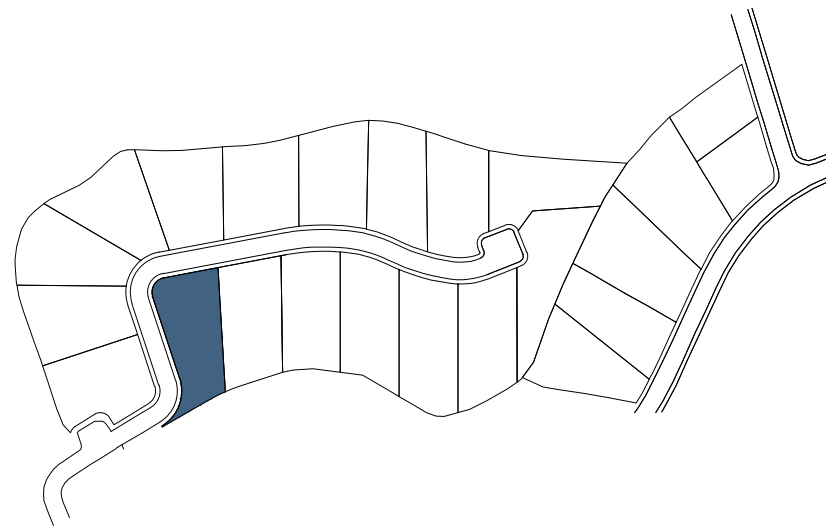
PLOT SURFACE : 854.55 m<sup>2</sup>

## FIRST FLOOR

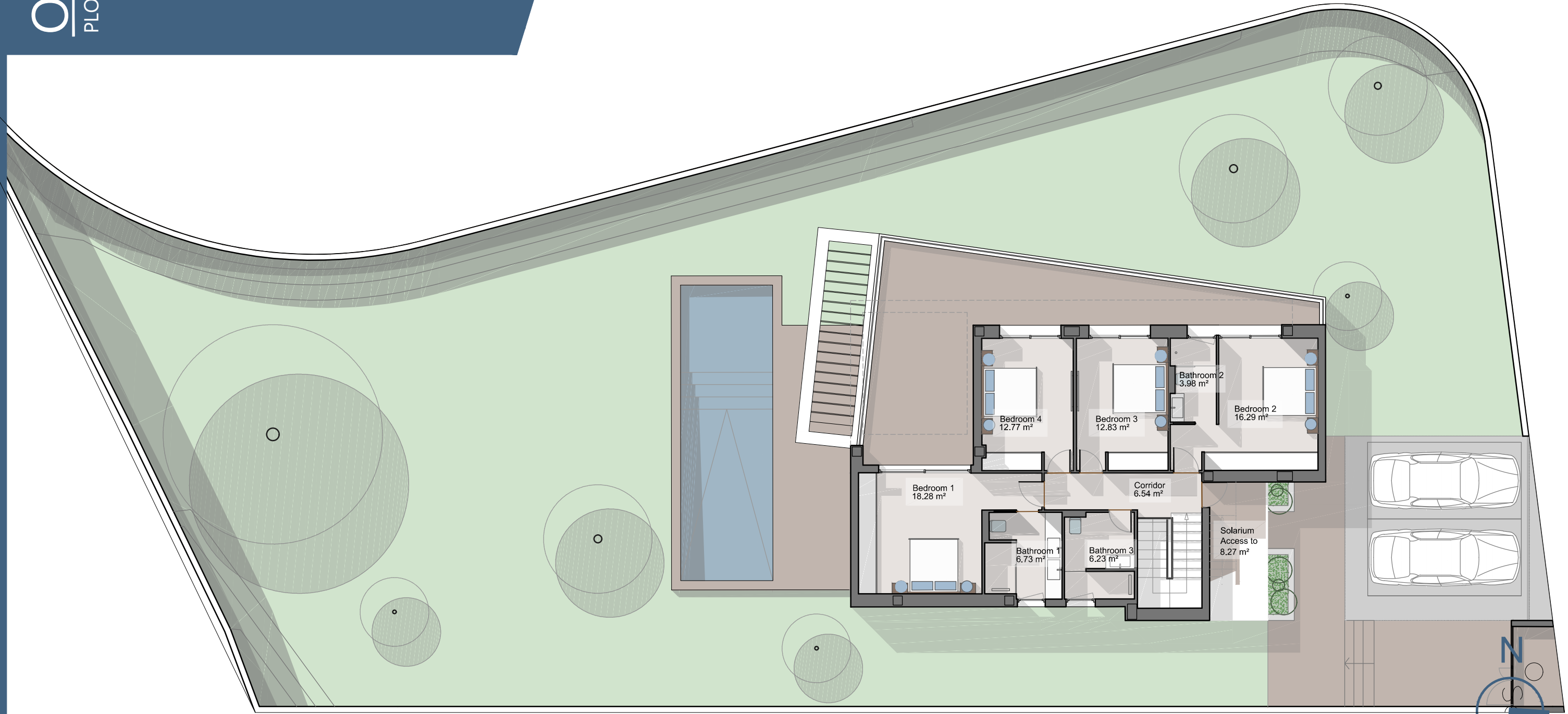
### BUILDING Surface

First Floor 112.05m<sup>2</sup>  
Terrace 42.62m<sup>2</sup>

**TOTAL BUILT FIRST FLOOR 154.68m<sup>2</sup>**



PROMOTORES



NOTA: Estos planos son orientativos, pudiendo sufrir modificaciones durante el desarrollo del proyecto, a juicio de la dirección técnica y de los organismos competentes. El mobiliario es figurativo no vinculante.

NOTE: These plans are for guidance only, and may change during the project, according to the technical management. Figurative furniture is not binding.

# OASIS 17-P17

PLOT SURFACE : 854.55 m<sup>2</sup>

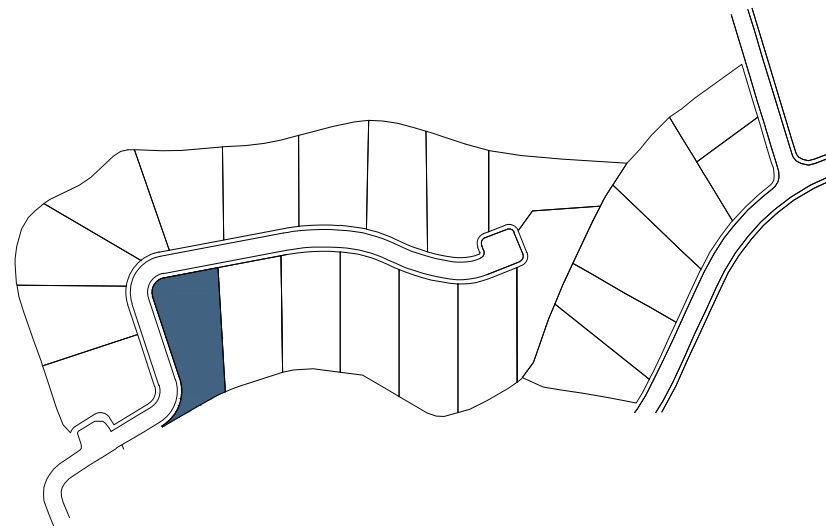
## SOLARIUM

### BUILDING Surface

Solarium 89.87m<sup>2</sup>

### TOTAL BUILT SOLARIUM

89.87m<sup>2</sup>



# oasis 17

laboratorio URBANO

M marein73

PROMOTORES



NOTA: Estos planos son orientativos, pudiendo sufrir modificaciones durante el desarrollo del proyecto, a juicio de la dirección técnica y de los organismos competentes. El mobiliario es figurativo no vinculante.

NOTE: These plans are for guidance only, and may change during the project, according to the technical management. Figurative furniture is not binding.



# OASIS 17-P17

PLOT SURFACE : 854.55 m<sup>2</sup>

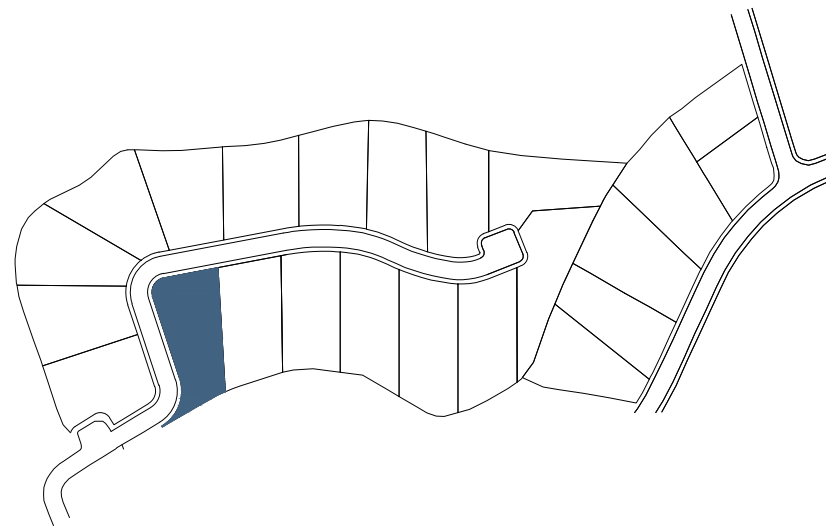
## BASEMENT 2

### BUILTING Surface

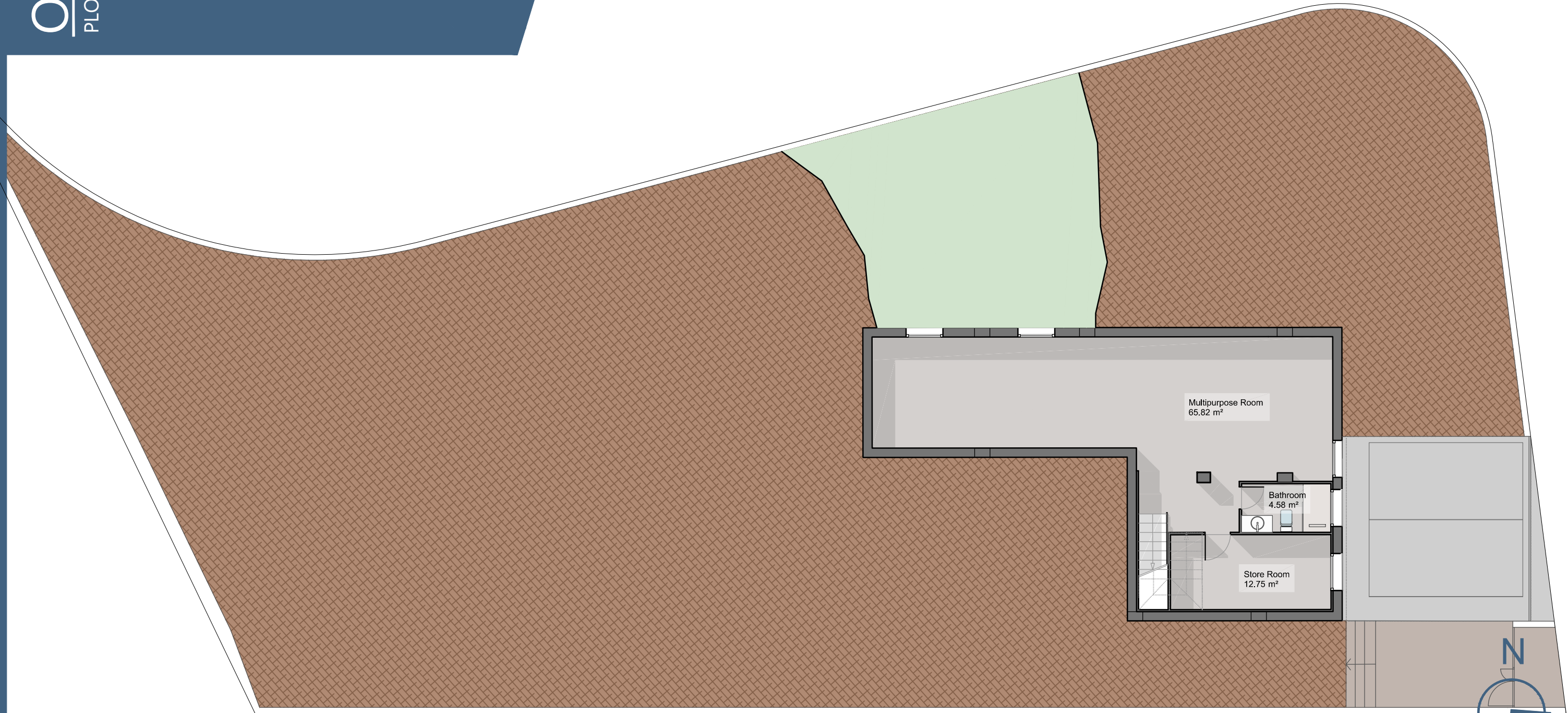
Basemnet 102.72m<sup>2</sup>

### TOTAL BUILT BASEMENT

102.72m<sup>2</sup>



P R O M O T O R E S



NOTA: Estos planos son orientativos, pudiendo sufrir modificaciones durante el desarrollo del proyecto, a juicio de la dirección técnica y de los organismos competentes. El mobiliario es figurativo no vinculante.

NOTE: These plans are for guidance only, and may change during the project, according to the technical management. Figurative furniture is not binding.

# OASIS 17-P17

PLOT SURFACE : 854.55 m<sup>2</sup>

## BASEMENT 3

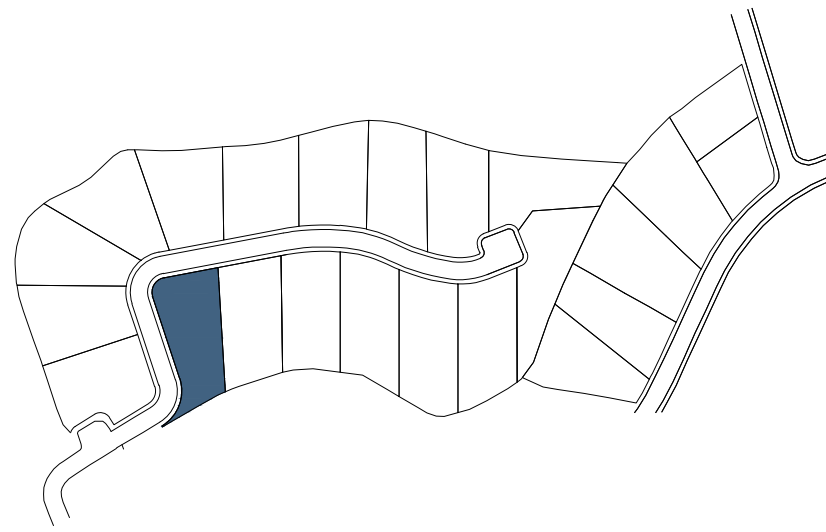
BUILTING Surface

Basemnet

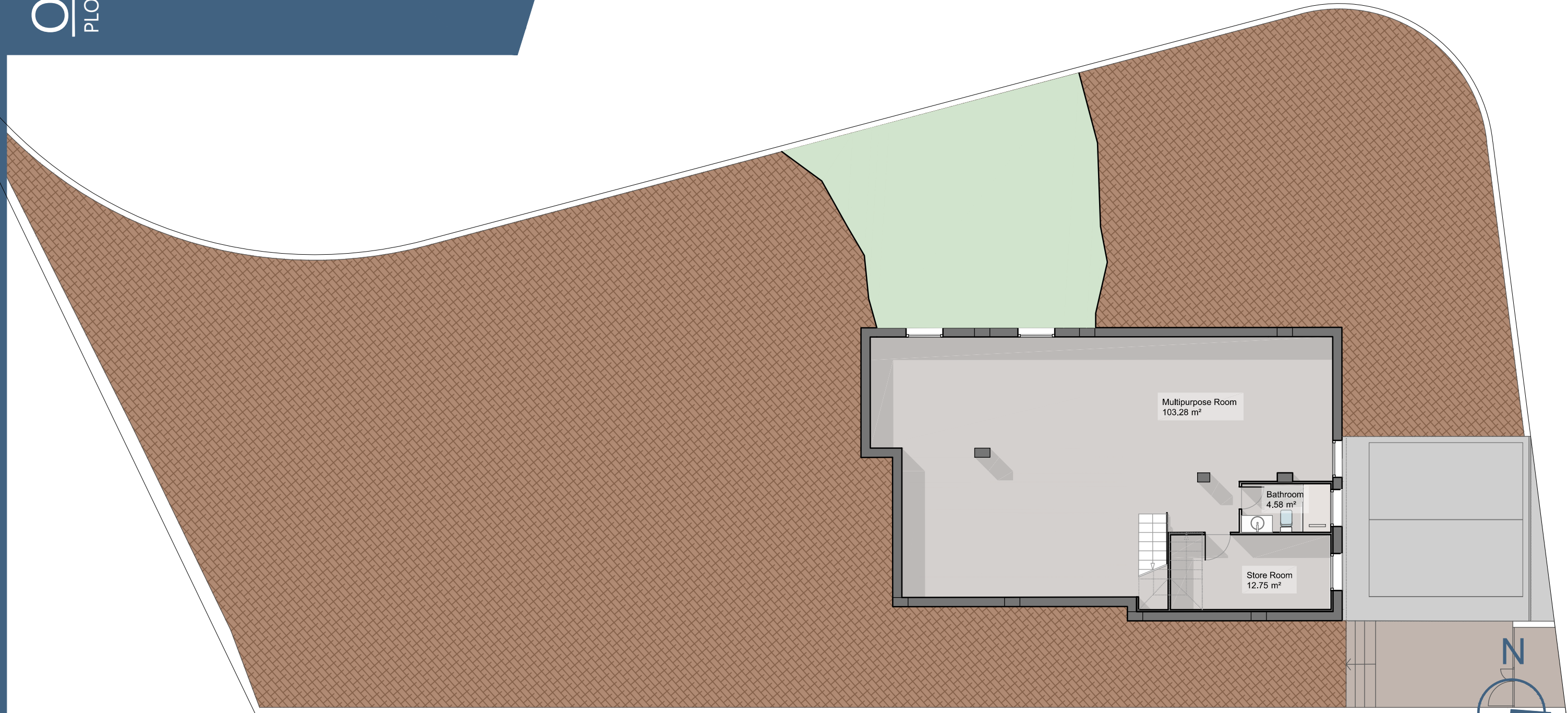
74.54m<sup>2</sup>

**TOTAL BUILT BASEMENT**

74.54m<sup>2</sup>



P R O M O T O R E S



NOTA: Estos planos son orientativos, pudiendo sufrir modificaciones durante el desarrollo del proyecto, a juicio de la dirección técnica y de los organismos competentes. El mobiliario es figurativo no vinculante.

NOTE: These plans are for guidance only, and may change during the project, according to the technical management. Figurative furniture is not binding.