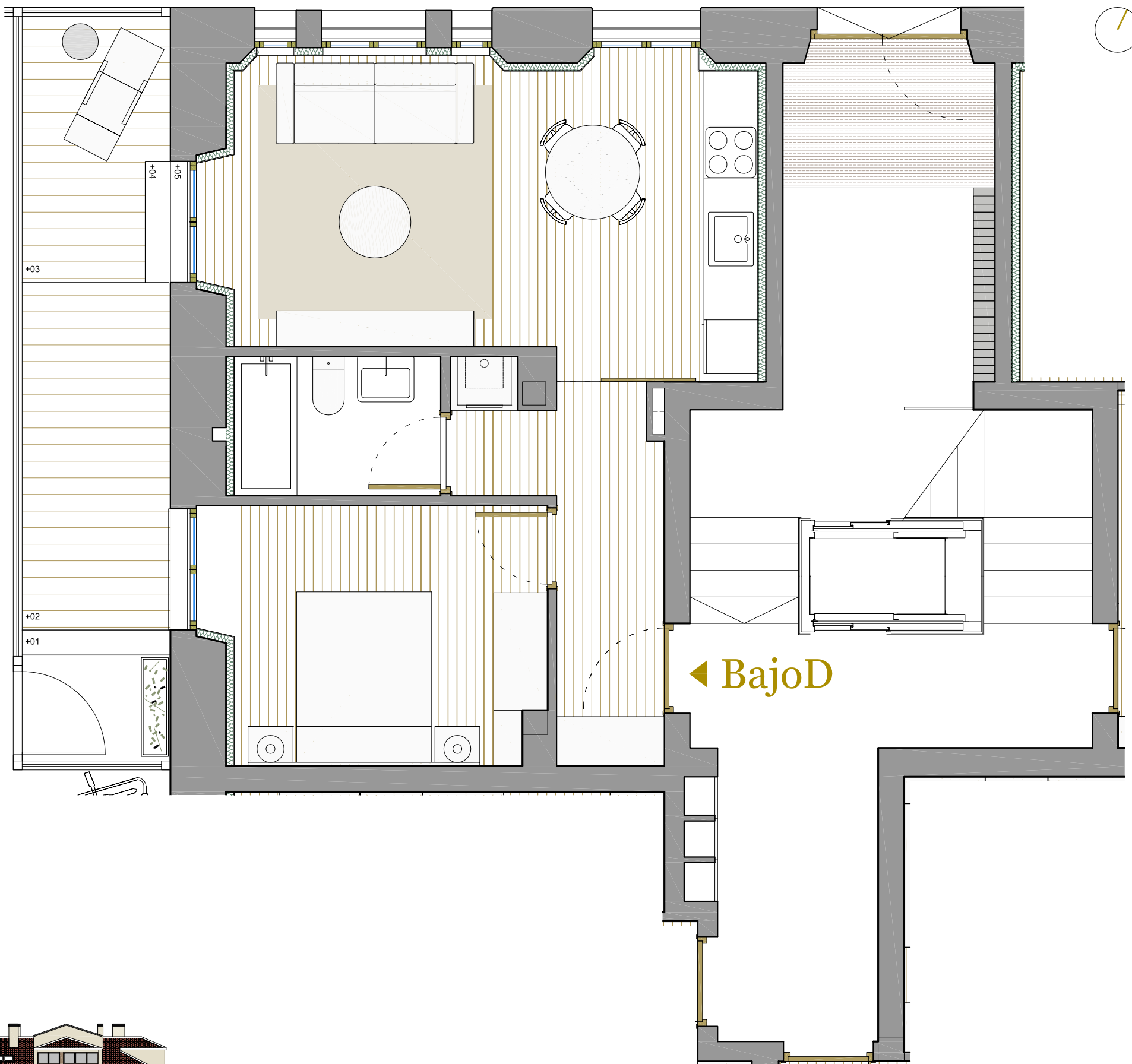


| VIVIENDA D | |
|--------------------------|------------------|
| VESTIBULO-DISTRIBUIDOR | 6,58 m2u |
| ESTAR-COMEDOR-COCINA | 20,14 m2u |
| DORMITORIO | 10,54 m2u |
| BAÑO | 3,57 m2u |
| JARDIN | 13,68 m2u |
| SUP. ÚTIL CERRADA | 40,83 m2u |
| SUP. CONS. | 52,96 m2c |



Bj^oD